

PreTemp® preform temperature probe

The PreTemp® temperature probe from Plastic Technologies, Inc., is a versatile and easy-to-use handheld instrument for measuring preform temperatures. It quickly measures interior preform temperatures to help users produce better containers and improve energy cost management.

The PreTemp® temperature probe features single-button operation and has a built-in display for quick reference. Powerful, user-friendly software to log and analyze data is also included.

The probe utilizes an array of non-contact infrared temperature sensors which provide detailed information to the operator. It can be used to measure and record up to 16 data points simultaneously.

Features:

- Fast reliable skin temperature measurement (inner surface)
- Non-contact sensors create a detailed temperature profile
- Color LED's indicate temperature gradient and min/max temperature location
- Specific preform height locations can be measured
- Height adjustment plate and centering puck provide consistent results
- Included software provides graphical display and data export options

Used for:

- Processing aid
- Confirms proper operation of heating system
- Assists in setting correct temperature profiles
- Resolving common setup problems
- Temperature verification for resin and color changes
- Troubleshooting of heat-related issues
- Validating the heat transfer through the preform wall



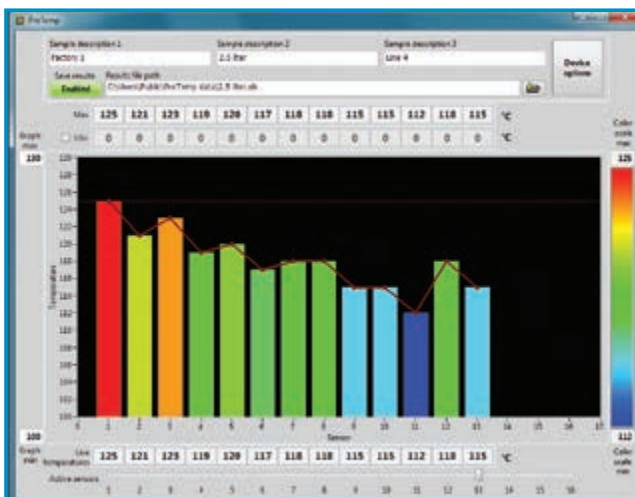
Unit operation and specifications:

The PreTemp® temperature probe can be used to take temperature readings without the need of a computer. Simply plug the device into a standard wall outlet for quick and easy reference of temperatures virtually anywhere. This mode provides the operator with a colored temperature profile, min/max temperature, and min/max temperature location on the preform. For additional temperature information and logging capability, the included software can be used.

Number of sensors:	16 on 10 mm spacing
Minimum preform ID:	12.5 mm
Units:	Fahrenheit or Celsius
Emissivity:	Adjustable (0.92 default)
Sensing range:	-70°C – 380°C
Repeatability:	0-60°C: ± 0.5°C 60-120°C: ± 1°C 120-180°C: ± 2°C
Operating environment:	-40°C – 85°C
IP Rating:	IPX0
Power:	Standard USB port OR 5 VDC power supply (incl.) Plugs into standard wall outlet for maximum portability.



Magnetic mount included



Software provides detailed analysis of preform temperature



PreTemp® temperature probe with accessories

Plastic Technologies, Inc.

1440 Timberwolf Drive
Holland, Ohio 43528

www.plastictechnologies.com
1-419-867-5400

PTI[®]
PLASTIC TECHNOLOGIES, INC.